

DIP-SWITCH SETTINGS (- = irrelevant)	ON	OFF
DSW1 in main pieceboard 501335	ON	OFF
DIP 1 - dental unit mode	configuration	normal
DIP 2 - hot water outlet for spraying on CHKs	disabled	enabled
DIP 3 - not used	-	-
DIP 4 - not used	-	-

ADJUSTMENTS

Main pieceboard 501335	Adjustment
TR1	Optic fibre light intensity
TR2	Minimum micromotor speed
TR3	Maximum micromotor speed (Max voltage scaler)
TR4 e TR5	free
Micromotor pieceboard 50 rev. 501046 and 900 rev. 501262	
P1	Analogue-to-digital switching
P2	Micromotor Torque
Logic pboard 501344	
TR1	Display contrast adjustment

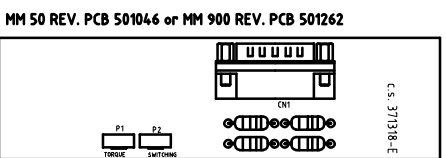
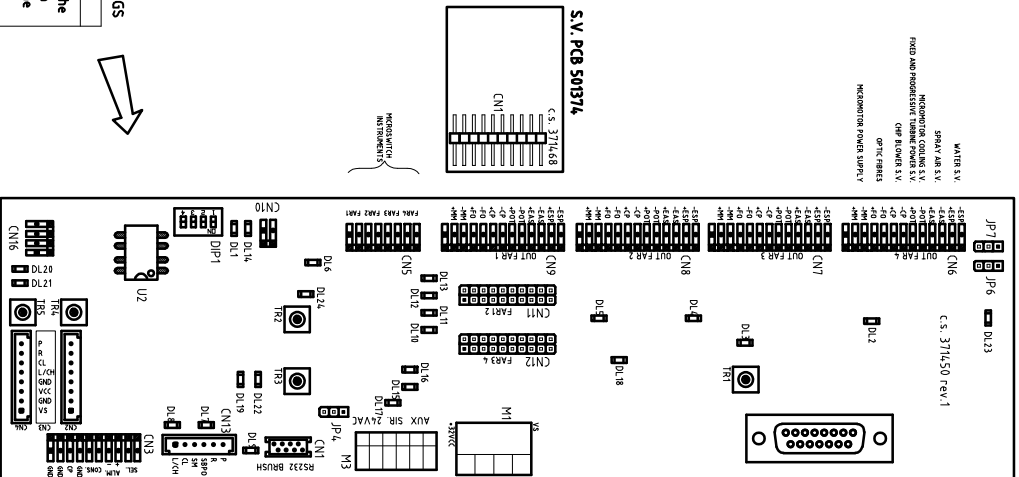
WARNING SIGNS

Main pieceboard 501335	Warning Sign
DL1	Free
DL2	LED - enable delivery unit 4
DL3	LED - enable delivery unit 3
DL4	LED - enable delivery unit 2
DL5	LED - enable delivery unit 1
DL6	LED - enable optic fibre
DL7	LED - SBPO out
DL8	LED - SBPO out
DL9	LED - analog exchange MM or tooth scaler out
DL10	LED - Inlet of delivery unit 4
DL11	LED - Inlet of delivery unit 3
DL12	LED - Inlet of delivery unit 2
DL13	LED - Inlet of delivery unit 1
DL14	LED on during EEPROM re-initialization
DL15	LED - 28V's power on
DL16	LED - VCC 5V power on
DL17	LED - 24VAC2 power on
DL18	LED - enable optic fibre
DL19	LED in SBPO monitor
DL20	LED - Reset for prog.
DL21	LED - Press for prog.
DL22	LED in mot. safety dev.
DL23	LED - Invert MM out
DL24	LED - delivery unit interlock output

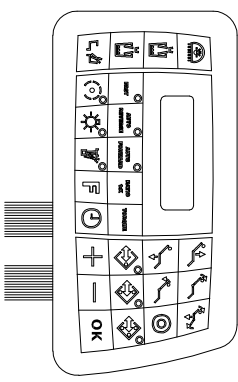
STORAGE DEVICE SETTINGS

Main Pieceboard 501335
In case of replacement of the general pboard, move U2 in the new pboard to keep the settings made.

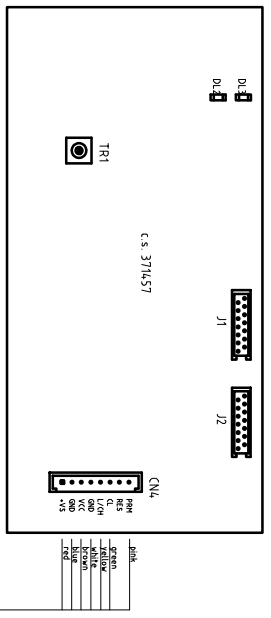
MAIN PIECEBOARD 501335



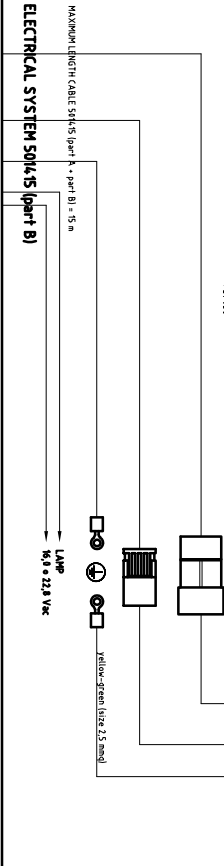
DISPLAYED ERRORS ARE DESCRIBED IN THE INSTRUCTION HANDBOOK



FOR INSTALLATION BRUSHLESS MICROMOTOR SEE DIAGRAM 520535
MEMBRANA PLUS 37262 + PCEBOARD 501368



ELECTRICAL SYSTEM 50145 (part A)



REV.1 UPDATED ON 17/03/2017

DESCRIPTION	GENERAL DIAGRAM UNIVERSAL STAR WITH COLUMN AND CHAIR UNIVERSAL TOP (TABLE V/S)
DATE	16/05/2012
DRAWN BY	
UPPER SECT.	
MAT. CODE	
PRJ. CODE	
SCALE	
DWG. NO.	520543

OMIS
CABLE IN SERRAZZO
-TAL-
OMIS reserves all property rights on this document and allows reproduction or translation only for private use without prior authorization.

WARNING SIGNS

Assistant table pcbboard 501371	DL1	LED - Press for flashing
	DL2	LED reset ext per col
	DL3	LED - ASP camera 1
	DL4	LED - ASP camera 2
	DL5	LED - enable camera out
	DL6	LED flashing with LIN bus active
	DL7	LED flashing if program is being correctly executed
Water unit pcbboard 501372	DL1	LED - Press for flashing
	DL2	LED reset ext per col
	DL3	LED - full level
	DL4	LED - intermediate level
	DL5	LED flashing with LIN bus active
	DL6	LED flashing if program is being correctly executed
	DL7	LED - enable camera
	DL8	LED - operating lamp out
	DL9	LED - spittoon out
	DL10	LED - cup 2 out
	DL11	LED - cup 1 out
	DL12	LED - CA/AP out
	DL13	LED - washing S.V. out
	DL14	LED - dental chair release S.V. out
	DL15	LED - part 1 out
	DL16	LED - app relay out
	DL17	LED - partialization S.V. out
	DL18	LED - water exchange S.V. out
	DL19	LED - part 2 out
Transformer pcbboard 501373	DL1	LED - fuse F4 in lamp malfunctioning
	DL2	LED - 28VAC fuse F5 in lamp malfunctioning
	DL3	LED - 24VACZ fuse F6 in lamp malfunctioning
	DL4	LED - 28VS fuse F8 in lamp malfunctioning
	DL5	LED - 24VAC1 fuse F7 in lamp malfunctioning
	DL6	LED - VS fuse F9 in lamp malfunctioning
	DL7	LED - 28VDC power
	DL8	LED - CA/AP relay out monitor
	DL9	LED - ASP relay out monitor
	DL10	LED flashing if program is being correctly executed
	DL11	LED press for flashing
	DL12	LED reset ext per col
	DL13	LED flashing with LIN bus active
Foot control pcbboard 501343	DL1	LED - inputs active
	DL2	LED - BUS active

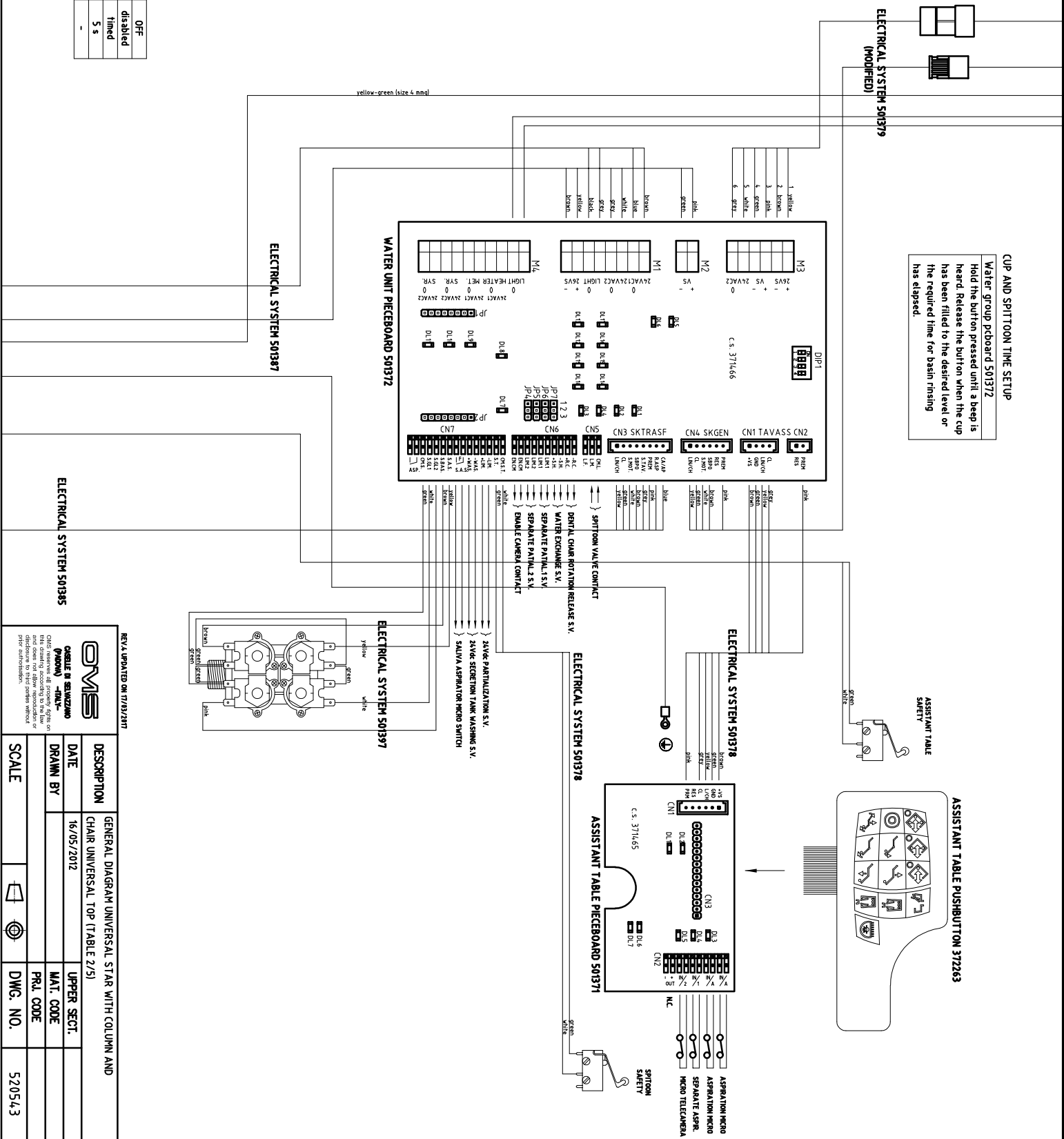
JUMPER AND ADJUSTMENTS

Water unit pcbboard 501372	1-2 closed. N.O. contact is obtained in E/C PART LUM21 of CN6
Jp4, Jp5	2-3 closed. 28Vdc is obtained in E/C PART LUM21 of CN6
Jp6, Jp7	1-2 closed. N.O. contact is obtained in E/C PART LUM11 of CN6
	2-3 closed. 28Vdc is obtained in E/C PART LUM11 of CN6

DIP-SWITCH SETTINGS (- = irrelevant)

DSW1 in water unit pcbboard 501372	ON	OFF
DIP 1 - enable spittoon S.V. after cup filling	enabled	disabled
DIP 2 - control of spittoon	on/off	timed
DIP 3 - delay in aspiration switch-off	0 s	5 s
DIP 4 - free	-	-

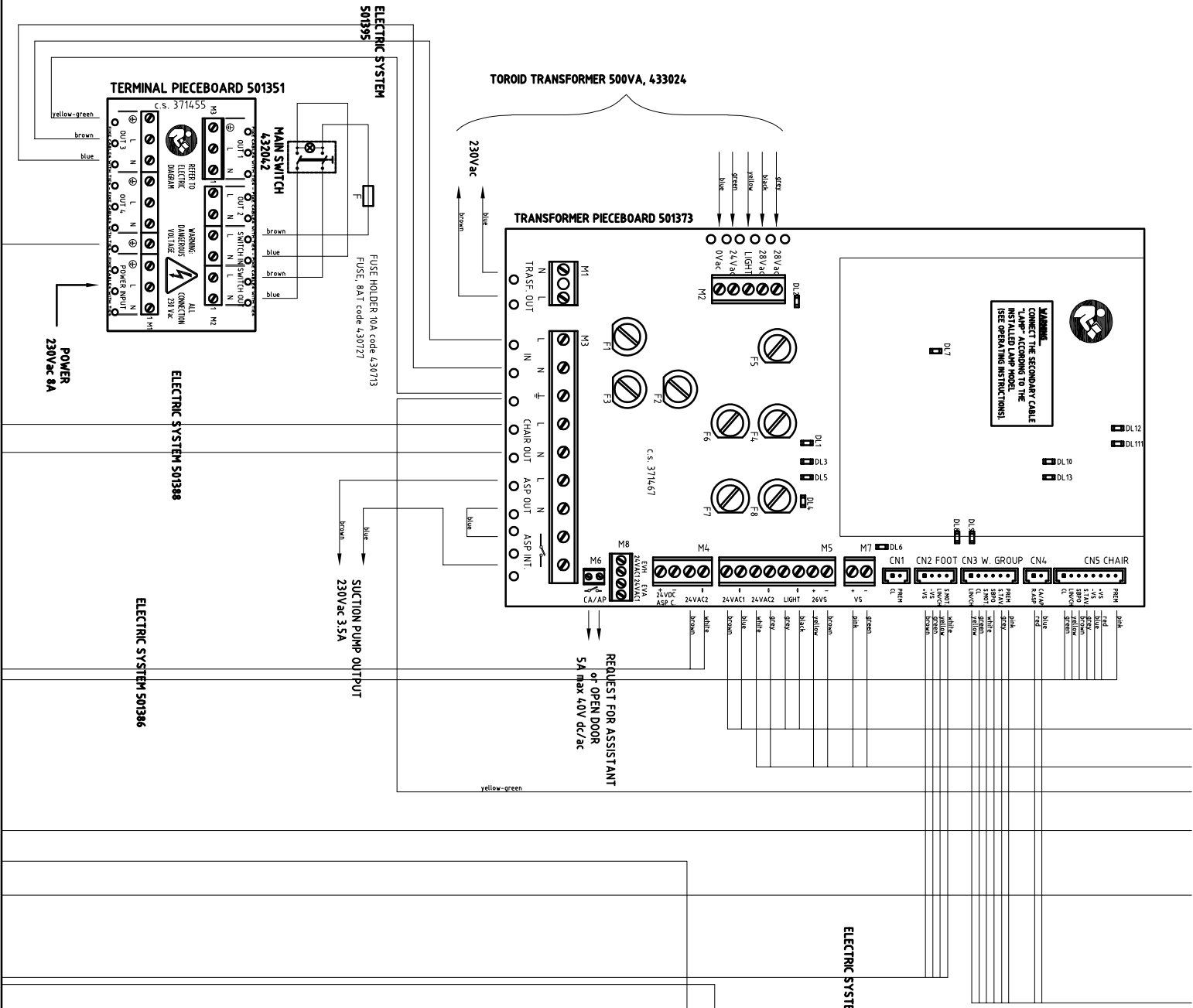
CUP AND SPITTOON TIME SETUP
 Water group pcbboard 501372
 Hold the button pressed until a beep is heard. Release the button when the cup has been filled to the desired level or the required time for basin rinsing has elapsed.



REV15 UPDATED ON 17/03/2017

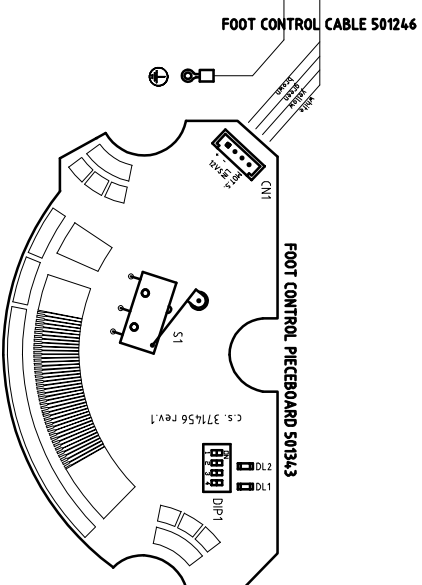
OMIS
 OSILE IN SERVIZIO
 (PUBBLICITÀ) - DM-L

DESCRIPTION	GENERAL DIAGRAM UNIVERSAL STAR WITH COLUMN AND CHAIR UNIVERSAL TOP (TABLE 2/5)
DATE	16/05/2012
DRAWN BY	
UPPER SECT.	
MAT. CODE	
PRJ. CODE	
SCALE	
DWG. NO.	520543



FUSES

F	8AT, general (230 Vac)
F1	Transformer pieceboard 501373
F2	4AT, primary transformer fuse (230 Vac)
F3	5AT, ASP OUT output (230 Vac)
F4	5AT, dental chair motors (230 Vac)
F5	6.3AT, operating lamp (16 or 22.8 Vac)
F6	8AT, pchboard and bus power supply 24Vx3 (28 Vac)
F7	6.3AT, syringes, 24 Vac motors, polym. lamp (24 Vac)
F8	6.3AT, boiler, separator, ca S.V. (24 Vac)
F8	6.3AT MM, prog. turbine, tooth scaler, cc S.V. (Vdd)



DIP - SWITCH SETPOINTS-FOOT CONTROL FUNCTIONS

DSW1 in foot control pieceboard 501343	1	2	3	4
Main lever-controlled dental chair movements; rising, zero and memory position with levers	off	off	off	off
Levers-controlled dental chair movements	on	off	off	off
Levers-controlled dental chair movements; main lever-controlled cups and operating lamp	on	on	off	off
Left lever-controlled turn of suction (right lever unchanged)	off	off	on	off

REV.14 UPDATED ON 11/13/2017


OMIS
OMIS Services, all products, software and manuals are registered trademarks of OMIS. All other trademarks are the property of their respective owners. All rights reserved. All other trademarks are the property of their respective owners. All rights reserved.

DESCRIPTION	GENERAL DIAGRAM UNIVERSAL STAR WITH COLUMN AND CHAIR UNIVERSAL TOP (TABLE 3/5)		
DATE	16/05/2012	UPPER SECT.	
DRAWN BY		MAT. CODE	
		PRJ. CODE	
SCALE		DWG. NO.	520543

LIST OF DISPLAYED ERRORS

E000	Foot control pboard is not connected or is malfunctioning
E001	pushbutton panel pboard is not connected or is malfunctioning
E002	pboard of the floor-mounted box not connected or malfunctioning
E003	pboard of the assistant Table is not connected or is malfunctioning
E004	dental chair pboard is not connected or is malfunctioning
E005	main pboard is not connected or is malfunctioning
E006	water group pboard is not connected or is malfunctioning
E007	faulty drive micromotor
E006	other error
E017	power protection
E018	motor phase missing
E019	serial communication timeout
E020	invalid EEPROM error
E021	over temperature error
E022	under voltage error
E023	over voltage error
E024	additional board disconnected (after startup) error
E025	timeout with additional board error
E026	invalid additional board version error
E027	invalid EEPROM in additional board error
E028	invalid mode error
E029	not used (free)
E030	frame error
E031	communication error between RS232
E032	28DC power fuse broken (fuse F8)
E033	24AC power Fuse 1 broken (fuse F7)
E034	Lamp fuse broken (fuse F4)
E035	24AC power fuse 2 broken (fuse F6)
E036	output suction short circuit
E037	output assistant call short circuit
E038	overcurrent in branch 2, 24 AC
E039	pboards and bus overcurrent
E040	switching overheated
E041	stabilised 28 DC voltage error
E042	rectified 28 DC voltage error
E043	24 AC voltage error
E044	Lamp voltage error
E045	stabilised 24 DC voltage error
E046	overcurrent in branch 1, 24 AC
E047	Lamp overcurrent
E064	"motor safety device" signal error
E065	EEPROM error water group pboard
E066	EEPROM error main pboard
E067	EEPROM error pushbutton panel pboard
E068	a Touch is stuck in the instrument Table pushbutton panel
E069	a Touch is stuck in the assistant Table pushbutton panel
E070	DAC error-dc micromotor and scaler
E071	overheating micromotor driver error
E072	battery error pedal wireless
EP01	power solenoid valve short circuit
EP03	short circuit power solenoid valve to grounding system
EA01	water solenoid valve short circuit
EA03	short circuit water solenoid valve to grounding system
EC01	chip blower solenoid valve short circuit
EC03	short circuit chip blower solenoid valve to grounding system
ES01	spray solenoid valve short circuit
ES03	short circuit spray solenoid valve to grounding system
EL01	wash output short circuit
EI03	short circuit wash output to grounding system
E201	shutter output short circuit
E203	short circuit shutter output to grounding system
EX01	shutter output 1 short circuit
EX03	short circuit shutter output 1 to grounding system
EY01	shutter output 2 short circuit
EY03	short circuit shutter output 2 to grounding system
EH03	assistant call / open door output short circuit
EH01	short circuit assistente call/open door output to grounding system
ER01	suction output short circuit
ER03	short circuit suction output to grounding system
EO01	short circuit in distilled / standard water exchange output
EO03	short circuit to grounding system of distill./st.d. water exchange out
EB01	chair release piston output short circuit
EB03	short circuit to grounding system of chair release piston output

REV.4 UPDATED ON 17/03/2017

 <p>CASALE M. SALIZANO -ITALY-</p> <p><small>OMS reserves all property rights on the contents of this document and does not allow reproduction or distribution of the same without prior authorization.</small></p>		GENERAL DIAGRAM UNIVERSAL STAR WITH COLUMN AND	
		CHAIR UNIVERSAL TOP (TABLE 5/5)	
DESCRIPTION	DATE	DRAWN BY	UPPER SECT.
	16/05/2012		
			MAT. CODE
			PRL. CODE
SCALE			DWG. NO.
			520543